

Out There

Designed by Lori Hein
Featuring Twilight by Whistler Studios
SIZE: 70" x 85"

FREE
PROJECT



PLEASE NOTE: BEFORE MAKING YOUR PROJECT, CHECK FOR ANY PATTERN UPDATES AT WINDHAMFABRICS.COM'S FREE PROJECTS SECTION.



Out There

KEY	FABRIC	SKU	YD	CUTTING INSTRUCTIONS
A		41099-1 Indigo	3/8	(1) 10 1/2" x WOF strip, subcut into (4) 10 1/2" squares.
B		41096-2 Twilight	3/8	(1) 10 1/2" x WOF strip, subcut into (4) 10 1/2" squares.
C		41094-1 Indigo	3/8	(1) 10 1/2" x WOF strip, subcut into (3) 10 1/2" squares.
D		41095-2 Twilight	3/8	(1) 10 1/2" x WOF strip, subcut into (3) 10 1/2" squares.
E		41098-1 Indigo	3/8	(1) 10 1/2" x WOF strip, subcut into (3) 10 1/2" squares.
F		41099-2 Twilight	3/8	(1) 10 1/2" x WOF strip, subcut into (3) 10 1/2" squares.
G		41097-2 Twilight	1 1/8	(6) 5 1/2" x WOF strips, subcut into (10) 5 1/2" x 12 1/2" pieces and (10) 5 1/2" x 8 1/2" pieces.
H		41095-1 Indigo	1 1/8	(6) 5 1/2" x WOF strips, subcut into (10) 5 1/2" x 12 1/2" pieces and (10) 5 1/2" x 8 1/2" pieces.
I		41100-3 Ivory	1 3/4	(6) 5 1/2" x WOF strips, subcut (2) strips into (1) 5 1/2" square and (20) 3 1/2" x 5 1/2" pieces. (3) 2 1/2" x WOF strips, subcut into (20) 2 1/2" x 5 1/2" pieces. (6) 3" x WOF strips, subcut into (80) 3" squares.
J		41100-1 Indigo	1 1/2	(4) 5 1/2" x WOF strips. (1) 5 1/2" square. (8) 2 1/2" x WOF strips for binding.
		Backing	5 1/4	
				78" x 93" piece of batting



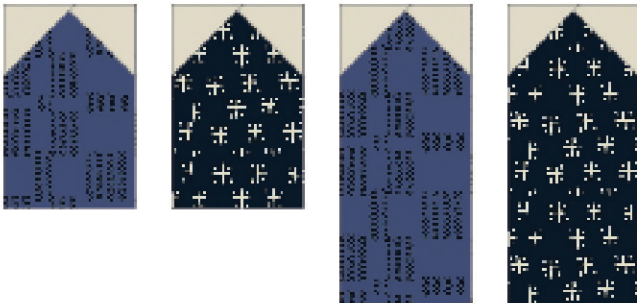
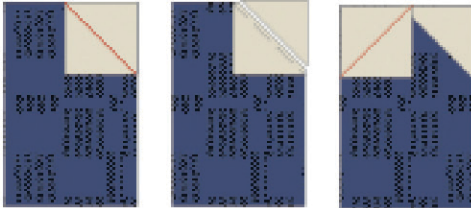
Out There

Sewing Instructions:

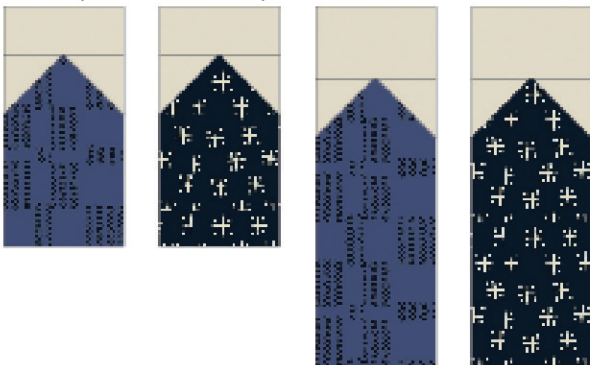
1. Draw a diagonal line on the wrong side of the 80 **I** 3" squares.



2. Position a marked square on the upper right corner of a 5 1/2" x 8 1/2" **G** piece as shown. Stitch on the drawn line, trim seam allowance to 1/4" and press open. Repeat on the upper left corner to make a **G** short arrow unit. Make 10 **G** short arrow units and 10 **H** short arrow units. In the same way, use the remaining marked **I** squares and the 5 1/2" x 12 1/2" **G** and **H** pieces to make 10 **G** long arrow units and 10 **H** long arrow units.



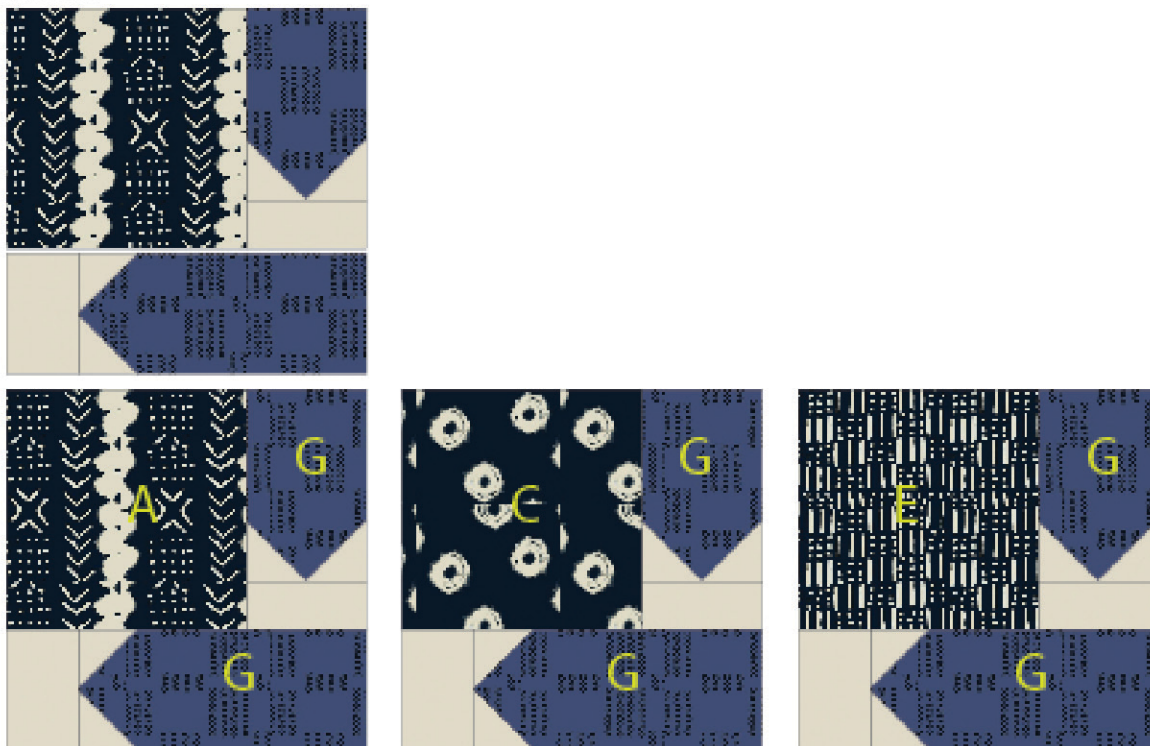
3. Sew 1 **I** 2 1/2" x 5 1/2" piece to the pointed end of each **G** and **H** short arrow unit. Sew 1 **I** 3 1/2" x 5 1/2" piece to the pointed end of each **G** and **H** long arrow unit.



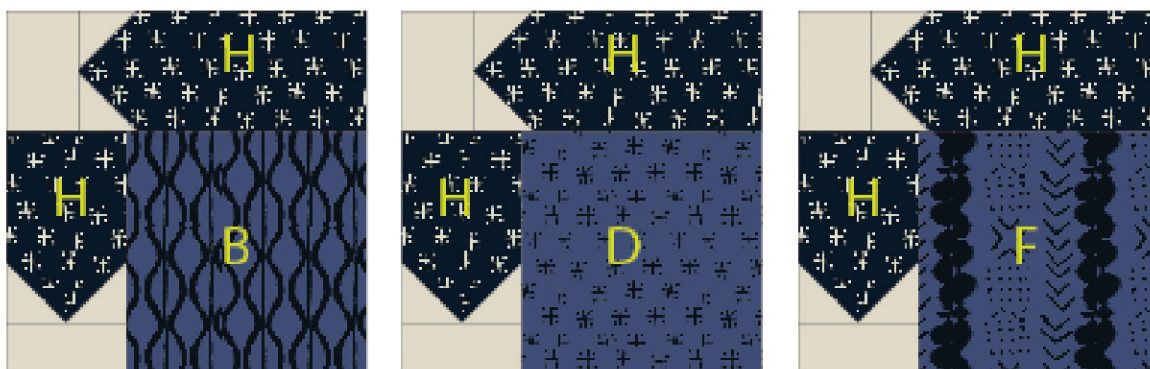


Out There

4. Sew 1 **G** short arrow unit to the right side of 1 **A** 10 1/2" square as shown. Sew 1 **G** long arrow unit to the bottom of the square. Make 4 **A** blocks. In the same way, make 3 **C** blocks and 3 **E** blocks.



5. Sew 1 **H** short arrow unit to the left side of 1 **B** 10 1/2" square. Sew 1 **H** long arrow unit to the top of the square. Make 4 **B** blocks. In the same way, make 3 **D** blocks and 3 **F** blocks.



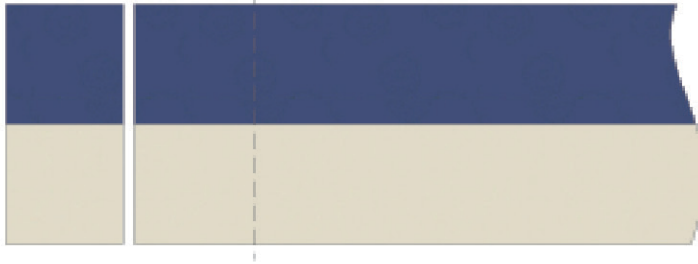
Assembly

1. Referring to the Quilt Layout Diagram, lay out the blocks in 5 rows of 4 blocks each, noting orientation of each block. Sew the blocks into rows and join the rows.



Out There

2. Sew 1 **I** 5 ½" x WOF strip lengthwise to 1 **J** 5 ½" x WOF strip. Make 4 strip sets. Crosscut the strip sets into 28 **I/J** 5 ½" wide segments.



3. Sew 6 segments together to create a top border. Repeat to make the bottom border. Sew the borders to the top and bottom of the quilt center.

4. Sew 8 segments together to create a side border. Make 2. Sew 1 **I** 5 ½" square to one side border and 1 **J** 5 ½" square to the other side border, following the I/J pattern. Sew to the sides of the quilt.

5. Lay the backing face down, batting and quilt top face up. Baste the layers together and quilt as desired. Use the 8 **J** 2 ¼" x WOF strips to bind the quilt.



Out There

Quilt Layout Diagram

